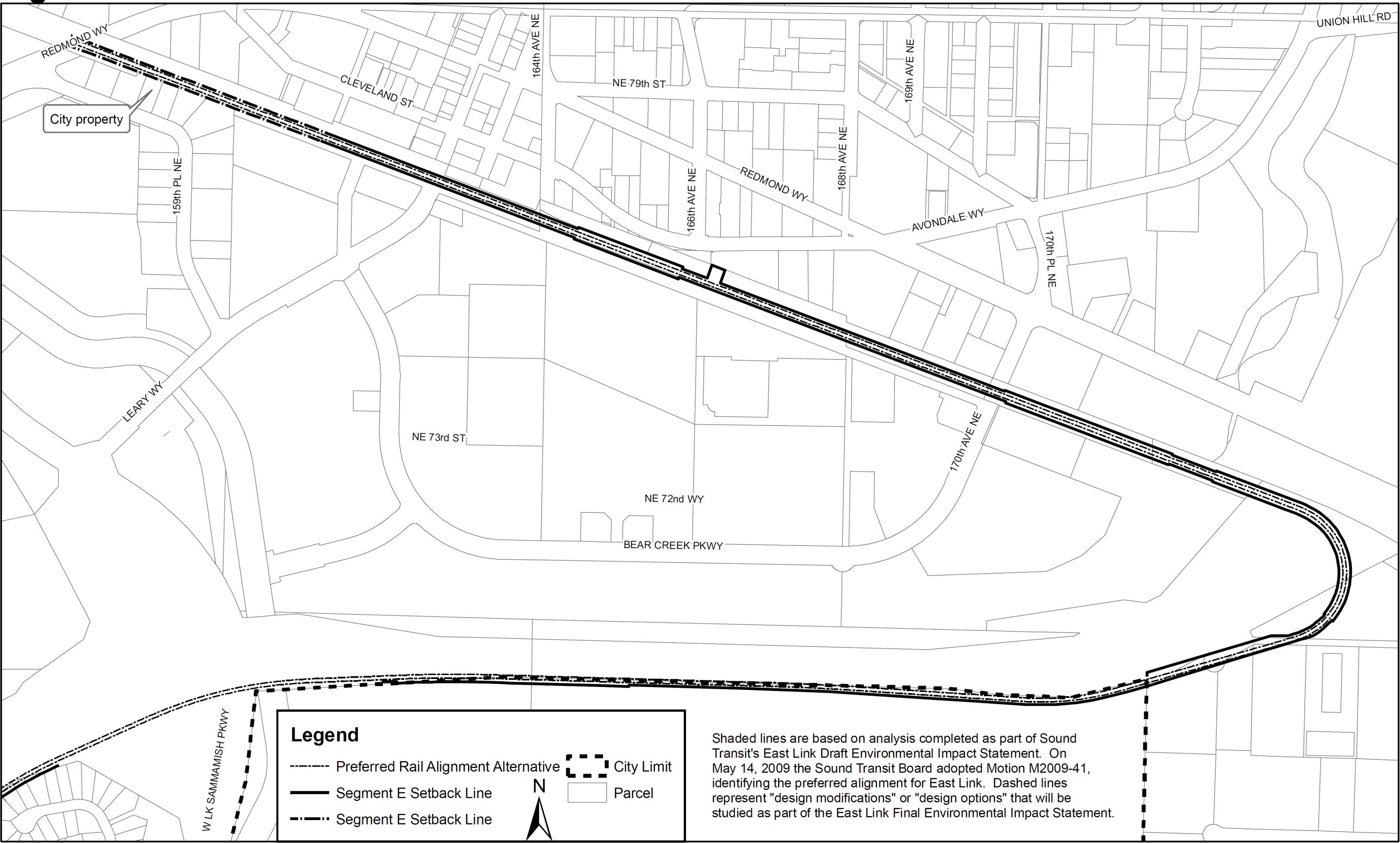


**Figure 3**



City property

**Legend**

- Preferred Rail Alignment Alternative
- Segment E Setback Line
- - - - - Segment E Setback Line
- ⌘ City Limit
- Parcel

N

Shaded lines are based on analysis completed as part of Sound Transit's East Link Draft Environmental Impact Statement. On May 14, 2009 the Sound Transit Board adopted Motion M2009-41, identifying the preferred alignment for East Link. Dashed lines represent "design modifications" or "design options" that will be studied as part of the East Link Final Environmental Impact Statement.

