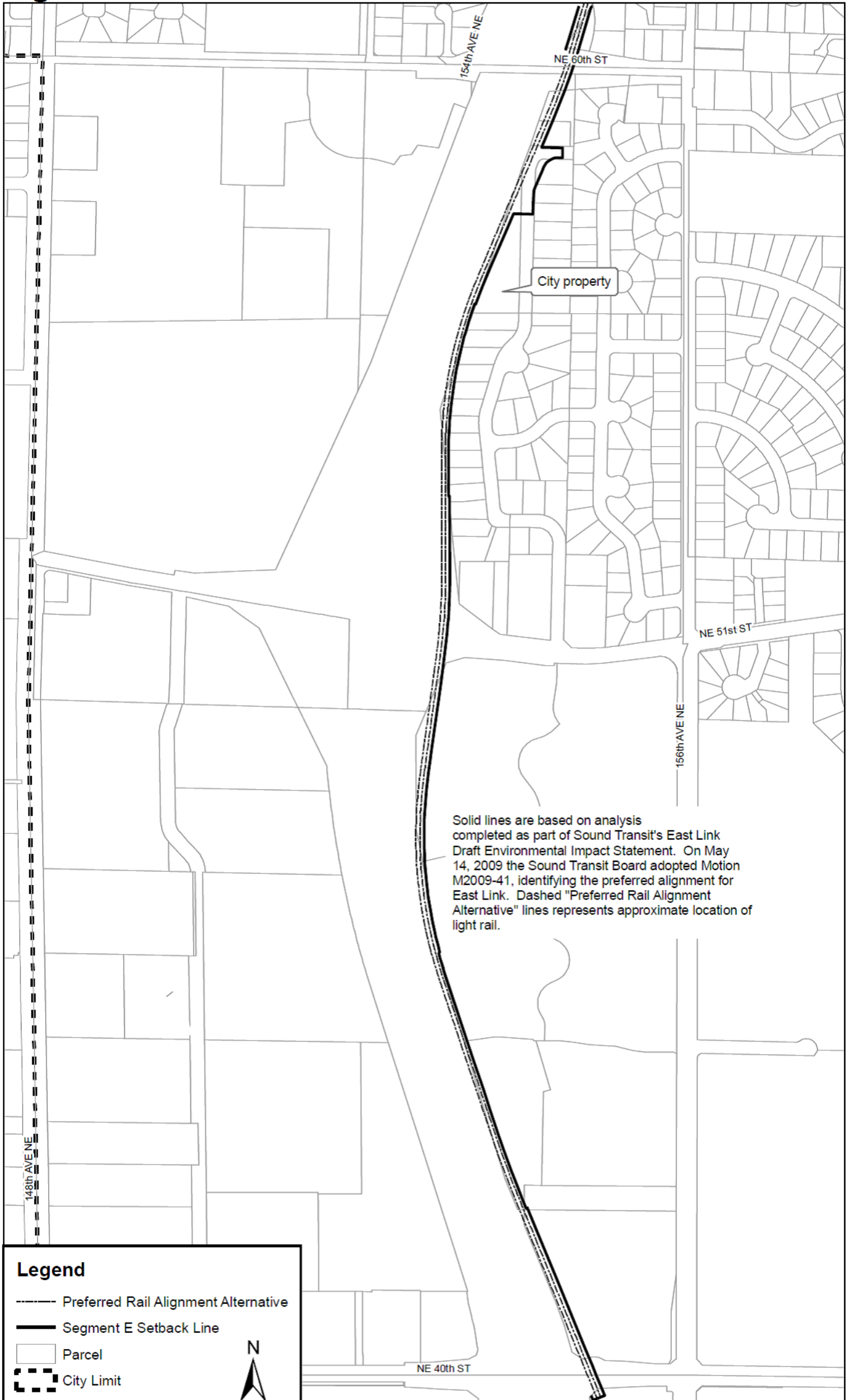


Figure 2



City property

Solid lines are based on analysis completed as part of Sound Transit's East Link Draft Environmental Impact Statement. On May 14, 2009 the Sound Transit Board adopted Motion M2009-41, identifying the preferred alignment for East Link. Dashed "Preferred Rail Alignment Alternative" lines represents approximate location of light rail.

Legend

- Preferred Rail Alignment Alternative
- Segment E Setback Line
- Parcel
- ⊞ City Limit



1" = 380' 0 380 760 1,520 Feet